



# **T** *exturline*



*Earth Friendly Decorative Products*



**T** | *exturline*



Based in Toronto Canada, Protek Paint Ltd. offers high tech water based environmentally friendly technologies and solutions including Texturline decorative mineral plasters and glazes, specialty paints, colour dispersions, protective sealers, Intumescent paint and multicolor seamless coatings.

### ***Mission Statement***

We, at Texturline, are convinced that *WORDS AND DEEDS* correctly reflect the universal and honest attitude that we have towards the profession practiced by us. Our ultimate goal is to provide our Customers with top quality products and services. This establishes positive relations and credibility between us and customers. Trust induces good will, which being prerequisite for involvement and loyalty, forming bonds founded on rational and emotional factors. It seems that a clear mission becomes more and more valuable, especially in a dynamically evolving market. The ability to create such a lasting relationship is a unique result of everyday work based on words and deeds. Our technical team is leading the industry with innovative products that fill the needs of our diverse client base, in non-pollutive coatings

***Toronto Canada across lake Ontario***





## TEXTURLINE THE PAINT YOU CAN FEEL

### Stone Textures Selection

Visualize the sandstone bluffs of north Carolina facing the sea, sculptured and pitted by coastal winds, in some areas protected and less exposed where the feel and appearance has over time by rain and wind been transformed into smooth honed stone. Carolina Sandstone can produce effects like this on walls, the way it's applied will reflect the look you desire. A best seller for over fifteen years with several million square feet sold and installed.



Carolina Sandstone plaster comes ready to apply in 2 forms, trowel and roller consistency. The latter can be sprayed and smoothed down and when combined with Texturline Aquaglass crackle undercoat create aged cracked weathered stone. The granular texture can be smoothed easily and can simulate Marmorino for interior décor.

It is packed in 4gal. and 1gal. containers that can be tinted with colorants.

Quarzo is the ideal material for all structural finishes; it will apply on any surface and transform the aspect into stone. The ease of application is only surpassed by its durability and easy maintenance. Turn that old fireplace into a focal point in any room, add a new identity to alcoves and moldings and make entrance hallway or walls look like something out of a 16<sup>th</sup> century European castle. The surface is washable and can be toned easily with Texturline glazing systems and washes.



The two stone finishes above and below compliment one another, like twins each with its own distinct character. Quarzo is an exterior/interior fully washable yet breathable opaque coating. Texturstone below is more suited for interior decorative stone, allowing the glaze to penetrate slightly and tapes can be removed after its fully dry.

Packaging is in 4gal and 1gal containers that can be tinted with universal colorants.

Texturstone is a variation of Quarzo that has a few attributes that add to its abilities to create stone in ways that allows artistic expression to run loose.

Where Quarzo is impervious to water Texturstone allows glazes to soak in enough to obtain realistic stone looks.

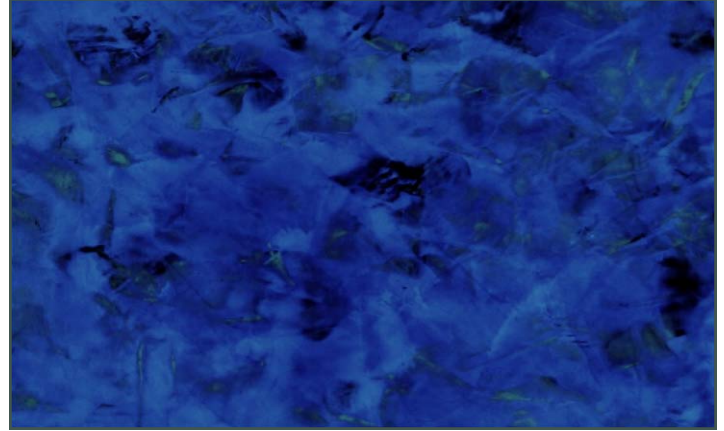
Texturstone flows on easier, so it can be brushed on moldings and irregular surfaces. When smoothing out on the wall you can choose between smooth or very textured as required.





## Polished Plaster by Texturline the paint you can feel

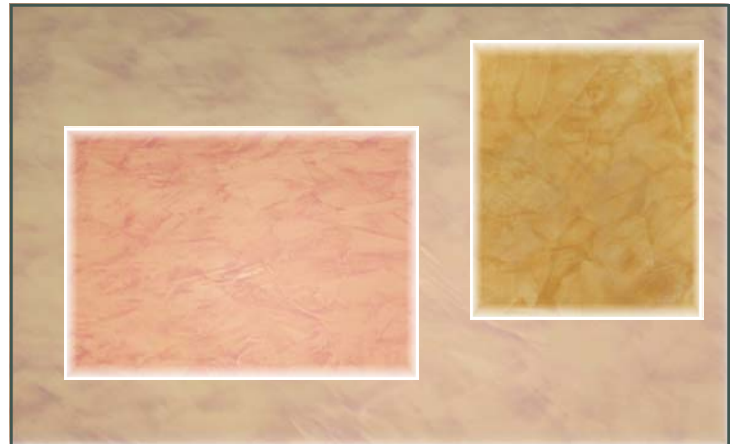
Venetiano lime based plaster recreates plasters used in Venice to compliment luxurious marbles that adorned the walls in the Palaces of the Doges. It has endured through time to be today's unrivaled fashion leader in wall finishes. The feel of its smooth tactile, dare we say sensual surface, with its dimensional integrated colour, oozes luxury and quality. Prized by those that have a wall of this artistic creation, desired by those who don't, it fits every 21st Century modern decorating scheme.



**Venetiano lime based polished plaster applied in the traditional way, with trowels and spatulas, in the hands of an expert is breathtaking. That does not mean the average painter cannot undertake this finish, with a little practice and learning from one of our DVD teaching tool, good results will always be attained. Texturline offers training North America and Europe so that you can hone the skills required to become a qualified certified tradesperson.**

Spatolato is the beautiful sister to burnished Venetian plaster, it is very similar application, however the burnishing is replaced with a topcoat of tinted acrylic wax. This system is by far the easiest and quickest method to produce acrylic venetian plaster, as its self polishing tinted waxing system tones and shines all in one application.

The final result is a durable resistant surface that meets all needs both commercially and residentially.



**The two finishes above & below are a slight step below Venetiano but are none the less of the highest standards. The skill set required to apply them is within the abilities of anybody on prepared walls for painting. The tools required are the same and execution is fast and easy by virtue of the product itself, that allows wet to wet application. The material dries fast and allows the contractor to finish multiple coats on the same day.**

To complete this trio Acrylic Stucco Antico is the most popular polished plaster we ever introduced to the north American market. Easy to apply, versatile in every way and exhibits all the qualities of a lime based plaster without all the hype.

Texturline has sold enough of this product to coat a wall wrapped around the earth many times.

Paul Shivkumar of Artifex Studios Ottawa, when recommending Texturline said "It has never failed me."

That speaks for itself as does this sample

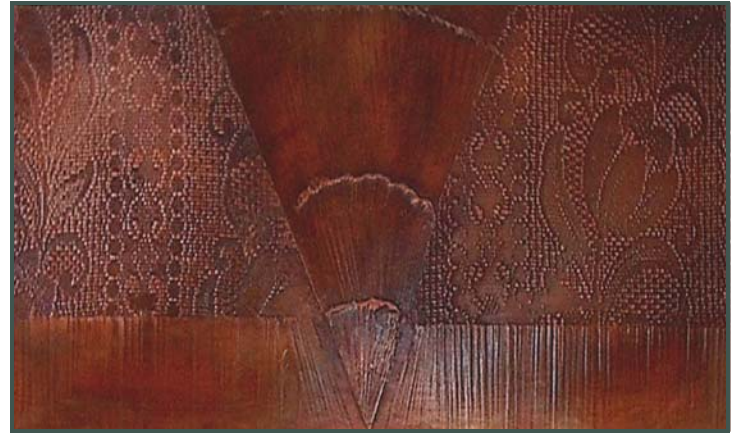




## Structural textures by Texturline the paint you can feel

Structural texture finishes using Texturbase brings a rich embellishment to any surface adding deep lustrous reflective tones and fine detail that gives a unique character impossible to achieve with any other system.

There are three elements to the sample on the right Texturbase acrylic plaster, oxide natural powder pigments and fast drying clear acrylic wax. This allows to go from a base texture to finished effect in one day saving both time and money.

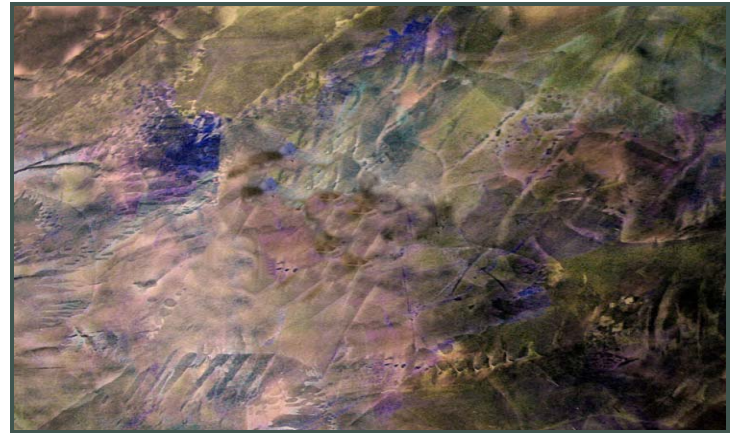


The reason Texturline is a leader in structural texture is demonstrated by 15 years of successful installations worldwide. Chosen as a backdrop by many architects for reception areas, as a profile for many high tech companies head quarters to create corporate identity and the medium used in décor for films from James Bond to Battleship Galactica. Nothing says, this is our corporate image, more than a custom texture that is unique to a company. Texturline together with the skill and artistry of professionals in the paint trade make this product unique and very desirable .

Texturline special effects iridescent textures are easily achieved using acrylic Venetian plaster as a base and coated with iridescent wax as a finishing coat.

The shimmering reflectivity changes its colour by refracting light giving the illusion of dimension and depth to any flat surfaces.

The world of faux is now truly your oyster bringing opalescence and lustrous shimmer to any surface at an economical price.



**Metal Effects** have is a luxury that is an expensive add on to any surface, with Texturline it is possible to metalize with a realistic touch, economically. We have created waxes that simulate metal so effectively that unless you saw it applied you would not know it from the real thing.

Application requires very little training or special tools and amazingly it dries very fast allowing several coats and patinas applied in one day keeping .

Metallic effects are a series of mica pigmented waxes that do not tarnish or fade. Combining these with Venetian plaster acrylic base is a fast metallic structure over any surface. Effects can be created in gold, copper, silver, bronze, pewter and many other metals to make any ordinary surface extraordinary.

The areas that are particularly suited are foyers, fireplaces, kitchen features, furniture, walls and crown moldings.





## Water Based Glazes, Scumble, Extender and Washes

Texturline has two glazes: low VOC flat washable glaze that has a one hour wet edge for seamless finishing and a satin low VOC with a 30/45 minute working time.

The satin glaze is also used as a scumble making this version a duplex as it allows paint and colorant to be mixed in for colour .

The flat glaze shares that method of coloration to provides a finish that dries low sheen and washable .



### Environmental statement

Texturline has recently made changes to it's glaze lineup to fall in line with EU and US state regulation to create products that have a low impact on ozone levels and global warming. We as a company have eliminated all products from our range that exceed the regulated volatile content levels.

At the same time we have followed EPA rulings relative to any ingredients discovered to be toxic or deemed a health danger to humans.

Scumble is an English term that means to apply a softened transparent colour over an opaque base tone. It is used extensively by skilled tradespersons to create faux marble and graining.

Texturline has two forms fast and slow drying. The slower version will allow blending and toning the faster one for positive application and fast recoating.

Supplied as a clear medium and dries to a satin sheen, coloring can be done using universal colorants.



We will continue to monitor and follow any updates as they are published and react accordingly, offering the best products available today on both continents.

We are producing a DVD series on washes, glazes and scumble, as we feel due to the reduction in the use of propylene glycol USP, a foodstuff ingredient that we use to extend the open time. Texturline believes that product knowledge is essential to successful green products. We will show how to take the fear out of washes drying and creating lap lines using a zero voc system. Glazing made easy coupled with some realistic marble and graining methods using products with low voc components.

Stonewash Powder Pigments, is the ultimate system to create color-washes on plaster quickly, with just a hint of color.

Definitely the most effective way to create visual texture over plasters: 14 Colors plus black and white provides an wide color pallet. Create pastel tones using a simple blend of 50/50 color with white. Unlimited colors can be created by blending any of the colors .





## Specialty Paints and coatings

Moiré is the latest creation from Texturline and probably one of the most sophisticated finishes we have ever launched. It has two distinct aspects, the first an opalescent highly reflective pearl or gold depending on the base used, under a veiled overlaid texture.

Its resemblance to oriental silk becomes apparent after two coats are applied. The gold and pearl subtle reflective look adds elegance to any decorative scheme. Both products can be tinted to any colour by adding universal colorants to beautiful subtle tones.



The most advanced finish Texturline has ever created not only by its ease of application but the refined effect it adds to any décor. It has client appeal straight out of the gate, satisfaction is guaranteed due to the subtle effect moiré delivers. Colour is not a problem as any custom tone can be created from simple tinting methods used currently in the trade.

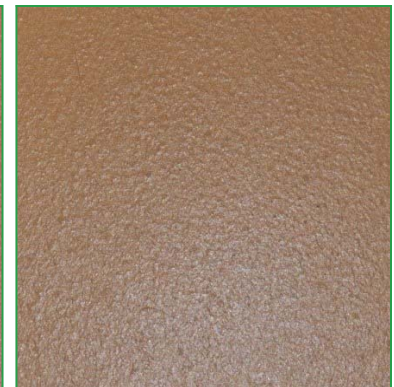
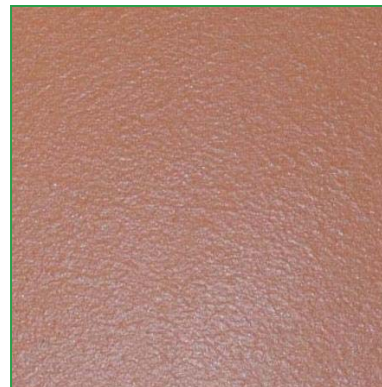
Aquaglass is a premium universal cracking medium that can create large structural cracks in our plasters as well as in latex paint. Unlike other systems on the market it delays initial reaction to allow large surfaces to be treated. Texturline also sells a reactive agent to increase the size of the plates as well as spacing in the cracks. This system is only available in gallons but conserves for up to 2 years unopened or correctly resealed.



Metaltech is a complete painting system in a wide range of colours. The system comprises of three bases: gold/silver/pearl that accept universal tint to create an unlimited colour range.

It can be rolled, brushed and sprayed covering a tinted primer in two coats without lap lines.

Its use is restricted to interior surfaces and exterior if a protective coat of UV varnish is applied protecting it.

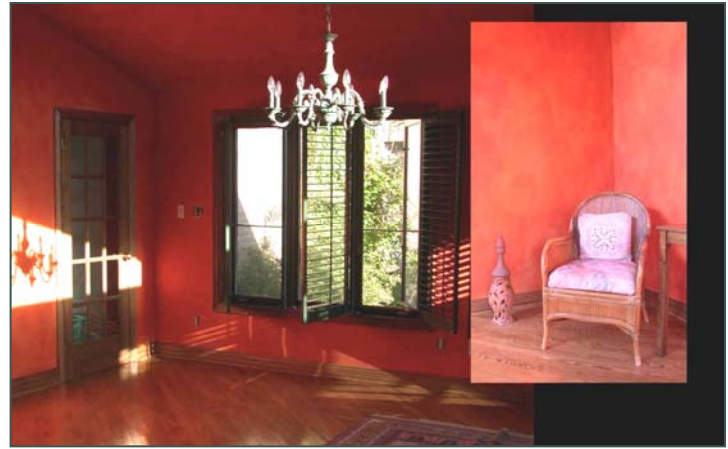




## Specialty Paints and coatings

Zero Gloss dead flat varnish describes this product to a tee. It is non reflective so therefore ideal for studio and cinema requirements. It does not change the colour of the paint or plaster its applied over. It is washable with good resistance forming a flexible film that can be rolled over artwork.

It is not recommended for exterior protection of murals as they require at least two weeks curing to prevent blushing and adverse weather can cause problems.



**Texturline offers a full line of primers that when coupled with our product range help in the easy fast application making a solid bond**

**to most substrates. Shark tooth primer is a keyed coating that reduces the application time and will bond our products to glossy surfaces. Its high opacity will cover any colour in one coat prior to application of our plasters. Texprime is a drywall sealer that has the same keyed texture to bond easily many plasters efficiently. Lime-proof primer is the perfect base for lime wash on exterior stucco creating a well bonded absorbent surface.**

Texturline Satin Varnish is an acrylic varnish suitable for coating furniture as well as all surfaces that require a durable finish.

When applied over plaster it can be burnished to a higher sheen as well as being able to be tinted with universal colorant.



Traditional Limewash is a North American take on the coating used to protect buildings in Europe for at least 2000 years. Though it forms a decorative coating over many surfaces, it does not look like acrylic paints. It does not peel as it is a mineral based material, water can penetrate it and over time will oxidize the lime turning it into limestone. Part of its charm is the gradual aging and patina of the surface causing the lime to blush adding a desirable polychromatic component.





# TEXTURLINE PAINT YOU CAN FEEL



The room to the left is decorated with a soft suede and silk combination called Moiré, pronounced 'morei' in English, a term describing silk fabric that has watered wavy appearance. Texturline has created a signature plaster texture that is both easy to use yet achieves a very professional end result. It can be colored in any of the standard paint colours in the same way paint is tinted in stores. This makes both the decorators and installers task that much easier by the use of all paint companies existing colour ranges and mixing methods.

As the color range becomes opalescent with Moiré the colors retain their candor while adding that extra luxury and depth of pearls and soft gold reflectivity.

The walls are a symphony of bitonality to coin a musical term, the two tones overlaying harmoniously as one. The effect is as if the two colours melded to create depth and texture where physically the surface is perfectly smooth. Here the illusion of depth is created by the product needing only to be balanced during placement on the wall.



The fireplace wall above is another example of Moiré, the difference here was only one colour was used in the gold medium. It shows the extraordinary reflectivity, obtained when using Moiré, picking up every ray of light played upon it. Outstanding features of this product include its extremely low VOC content making it an ideal candidate in today's world. Its low odor and water based non toxic formula play well with anybody specifying LEED or any other environmentally oriented project. The future of a clean air is first and foremost the Texturline mission for the future of decorative innovation.

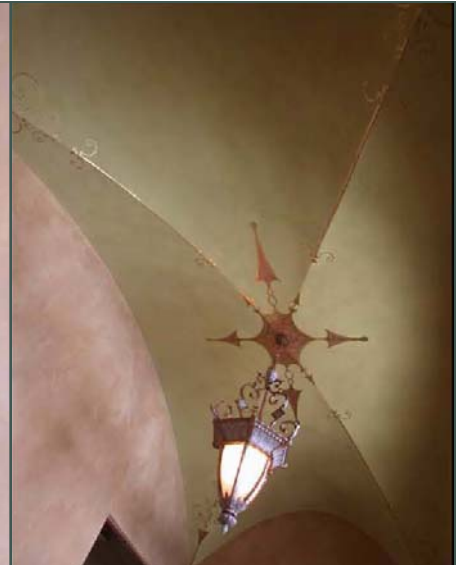
Stone finishes have always been a popular wall finish and in particular limestone blocks. The décor above compliments this loft adding a focal point to the overall feeling of urban chic in demand by younger executives in New York. The product used here is Texturstone, a finish that can be rolled or sprayed then finished with a trowel achieving a realistic stone. The colour can be enhanced with a wash or glaze giving the variations that add dimensional reality to the whole effect. As usual with Texturline coloration is simple and any tone can be created with in store tinting systems and matched to existing paint manufacturers chips.



## TEXTURLINE PAINT YOU CAN FEEL



*Venetiano*



When Texturline Lime products are used by expert professionals the results are breathtaking. Lime allows the user to take advantage of its properties creating marble and honed stone unlike any other form of plaster. Its inherent ability to polish to the highest sheens make it as sought after as real marble. It can embellish any surface taking on a cloak of magnificent marble or rare semi precious stone.

Texturline has adapted the formulas so universal tints can saturate the material to deep luxurious colour or subtle layered strata that has a tactile sensual feel to the touch.

